



LIUGONG MATERIAL HANDLER

MH-60

ISLAND-READY HEAVY
EQUIPMENT SOLUTIONS



MICRONESIA
CONTRACTORS SOLUTIONS



[MCSHEAVYEQUIPMENT.COM](https://mcsheavyequipment.com)



+1 (671) 473-4374



17-3311 CORSAIR RD., TIYAN, GU 96931

SPECIFICATIONS

ENGINE

Emissions rating	EPA Tier 4 Final
Make	Cummins
Model	X12
Aspiration	Turbo charged, charge air cooled
Cooling fan drive	Reversible direct drive fan
Displacement	720 cu.in. (11.8L)
Gross power	400HP (298kW)@2100
Peak torque	2,034 N-m (1,500 lb-ft) @ 1,400 rpm
Cylinders	In-line, 6 cylinder HPCRl
Bore x Stroke	132mm x 144mm (5.20 in x 5.67 in)

HYDRAULIC SYSTEM

KAWASAKI

Hydraulic piloted joysticks for simplicity (no laptop needed)

Pump Type	Dual Axial Piston Pump
Maximum flow	2x380 L/min
Max Pressure	4975 psi (34.3 mpa)
Hydraulic tank	76.6 gal.
Filtration	Dual Filtration System

All pressures can be accessed through the cab display. No special gauges needed.

UPPER CARRIAGE

The upper structure is strongly reinforced using an H-beam in the high cross section of main structure providing even weigh distribution and increasing stability. The platform's collision protection system has been welded into place to improve its strength, rigidity, and overall service life.

TRAVEL / UNDERCARRIAGE

Type/ Drive System	All Wheel Drive variable displacement motor with dual stage power shift transmission
Travel Speed	1st 0 -4mph (0-7 km/h) 2nd 0-14 mph (23 km/h)
Tires	12.00-24/8.50 (solid rubber)
Steering	Joystick steering
Rear Axle	Fixed
Front Axle	Oscillating with hydraulic lock, integrated safety check valves
Service Brake	Disc brakes
Parking Brake	Multidisc brake , spring loaded
Safety	Travel Alarm

SWING SYSTEM

Drive	2 x axial piston motor driving planetary gearbox, integrated brake vales
Swing speed	12 rpm
Swing Hydraulic	open loop
Swing Brake	multi-disc brake, spring loaded
Swing Bearing	internal teeth, sealed bearing

Refill Capacities

Fuel tank	171 gal
Engine cooling system	13.2 gal
Engine oil w/filter	8.98 gal
Hydraulic tank	76 gal
Hydraulic system	124.2 gal
Swing motor (each)	1.4 gal
Axle hub (front)	.31 gal
Axle hub (rear)	.39 gal
Axle differential (front axle)	6.9 gal
Axle differential (rear axle)	5.1 gal
Axle transmission	.8 gal
Swing ring lubrication reservoir	.26 gal
Central lubrcation reservoir	5.5 lb
Diesel exhaust fluid.	7.93 gal

ELECTRIC SYSTEM

System voltage	24 Volt
Battery	2 x 12 V, 120 Ah
Alternator	24v-70A

OPERATING WEIGHT

Operating Weight, typical	119,400 lb
---------------------------	------------

CENTRAL AUTO LUBE

GROENEVELD-BEKA

BALDOR GENERATOR

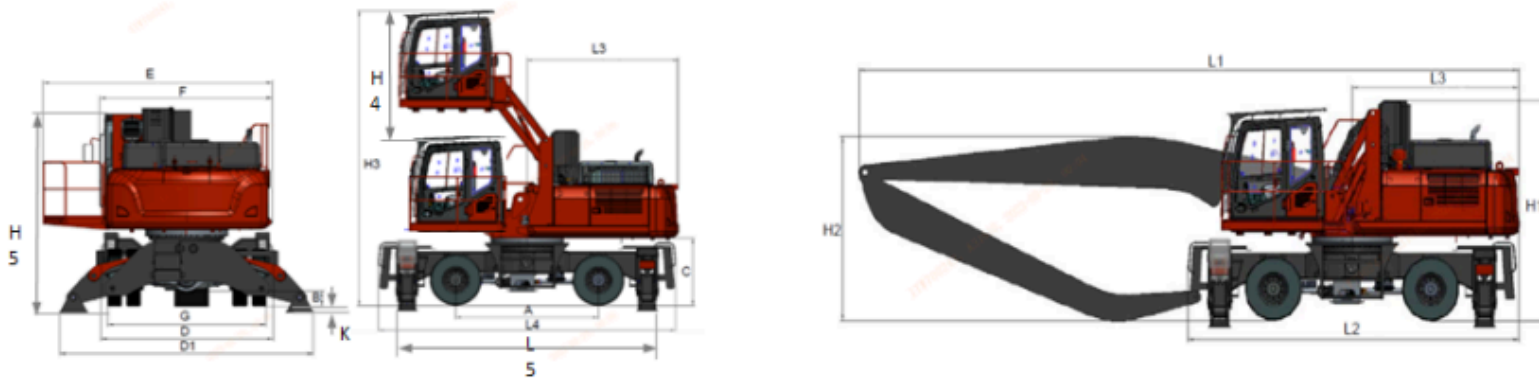
33 kW

HUBBELL CONTROLLER

HC58441-090



SPECIFICATIONS



DIMENSIONS		DIMENSIONS	
Description	DATA	Description	DATA
A Wheelbase	11'8	Overall width of machine (transportation)	13'8
B Ground Clearance	8"	Boom Length	35'
C Counterweight Clearance	5	Stick Length	24'
D Undercarriage width	12'1	Maximum Reach Radius	60'
D1 Undercarriage width (all outrigger extended)	18	Ambient Operating Temperature	*-23°C to 45°C (-9.4°F to 113° F)*
E Width of upper structure (with operator catwalk)	14'4W		
F Width of upper structure (without operator catwalk)	10'2		
G Track width (outside to outside)	12'		
H1 Overall height (with Generator)	14'		
H2 Boom height	14'		
H3 Cab height (Raised)	21'3		
H4 Cab Raised height	8'10		
K Wheel clearance (all outrigger extended)	4"		
L1 Overall length (with front)	47'9		
L2 Overall length (without front)	25'		
L3 Rear end length	11'9		
L4 Undercarriage length	25'		
L5 Undercarriage length (outrigger to outrigger)	21'		



